

\$1,350,000 - 1806 Okeechobee Road, West Palm Beach

MLS® #RX-10565265

\$1,350,000

Bedroom, Bathroom, 6,608 sqft
Commercial on 1 Acres

N/A, West Palm Beach, FL

Professional law office building minutes from downtown West Palm Beach, Palm Beach International Airport, Brightline Station, easy access to I-95 and more! This one story, standalone building has excessive parking, covered parking, existing monument signage, a car charging station and warehouse storage. Beautifully renovated in 2004 with high end finishes, ceilings & doors. The 6,368 square foot building has a reception area, 15 private offices, additional open office space, 6 restrooms, 2 kitchenettes and a large & small conference room.

Built in 1956

Essential Information

MLS® # RX-10565265

Price \$1,350,000

Square Footage 6,608

Acres 0.50

Year Built 1956

Type Commercial

Sub-Type Industrial, Professional Office, Other

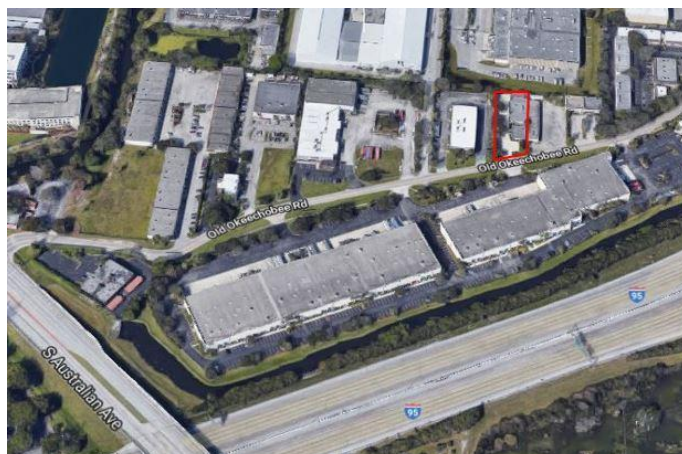
Style Commercial, Manufacturing-Light, Office/Professional,
Office/Warehouse, Office Space, Industrial

Status Pending

Community Information

Address 1806 Okeechobee Road

Area 5450



Subdivision N/A
City West Palm Beach
County Palm Beach
State FL
Zip Code 33409

Amenities

Utilities 3-Phase Electric, Public Sewer, Public Water

Interior

Appliances Building Only, Fixtures
Heating Central
Cooling Central
of Stories 1

Exterior

Lot Description Professional Office
Roof Tar/Gravel, Other

Additional Information

Date Listed September 30th, 2019
Days on Market 241
Zoning I(city

Listing Details

Listing Office Touchstone-Webb Realty Co.



All listings featuring the BMLS logo are provided by Beaches MLS Inc. Copyright 2020 Beaches MLS.
This information is not verified for authenticity or accuracy and is not guaranteed.

© 2020 Beaches Multiple Listing Service, Inc. All rights reserved.

Listing information last updated on May 28th, 2020 at 9:07pm EDT